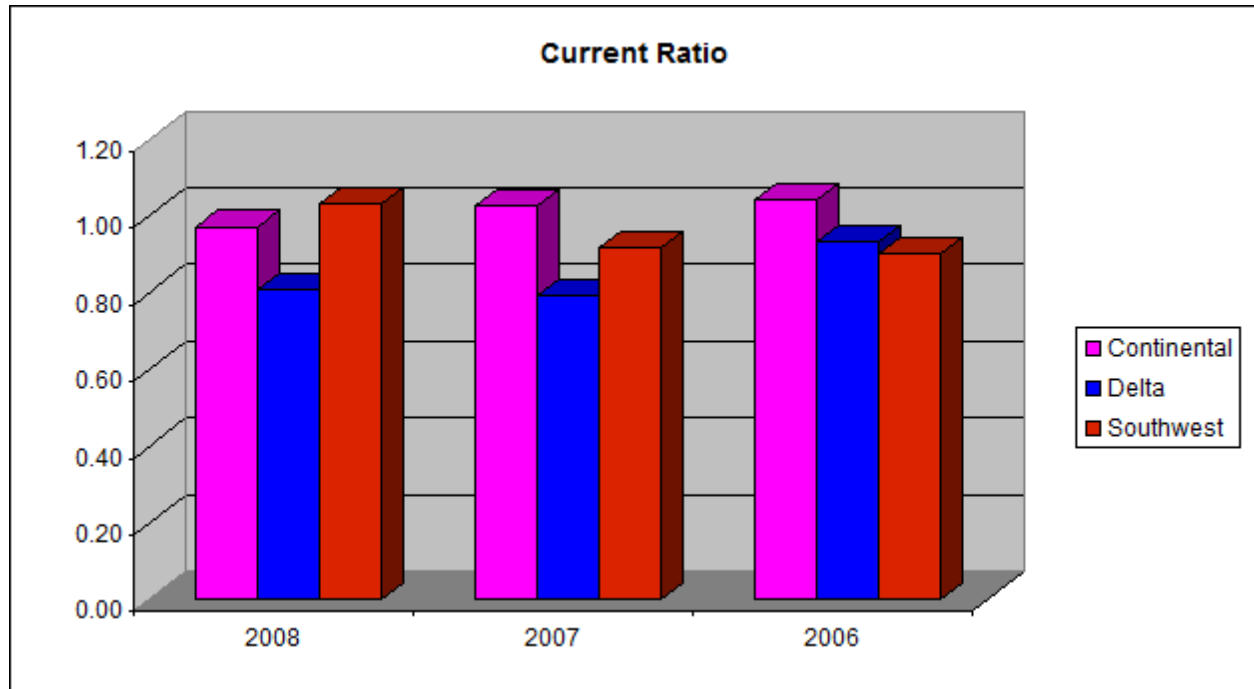


Liquidity Ratios - CURRENT RATIO

Current Assets / Current Liabilities

Company	2008	2007	2006
Continental	0.97	1.03	1.04
Delta	0.81	0.79	0.93
Southwest	1.03	0.92	0.90
Averages	Continental =1.01	Delta = 0.84	Southwest = 0.95



Company	2008	2007	2006
Continental	4347000/4474000	4561000/4449000	4129000/3955000
Delta	8904000/11022000	5240000/6605000	5385000/5769000
Southwest	2893000/2806000	4443000/4838000	2601000/2887000

The current ratio measures the firm's ability to meet its short term obligations. **Continental** has the best ability to meet the firm's short term obligations and **Delta** has the least ability to meet the firm's short term obligations.

Liquidity Ratios - QUICK RATIO

Current Assets - Inventory / Current Liabilities

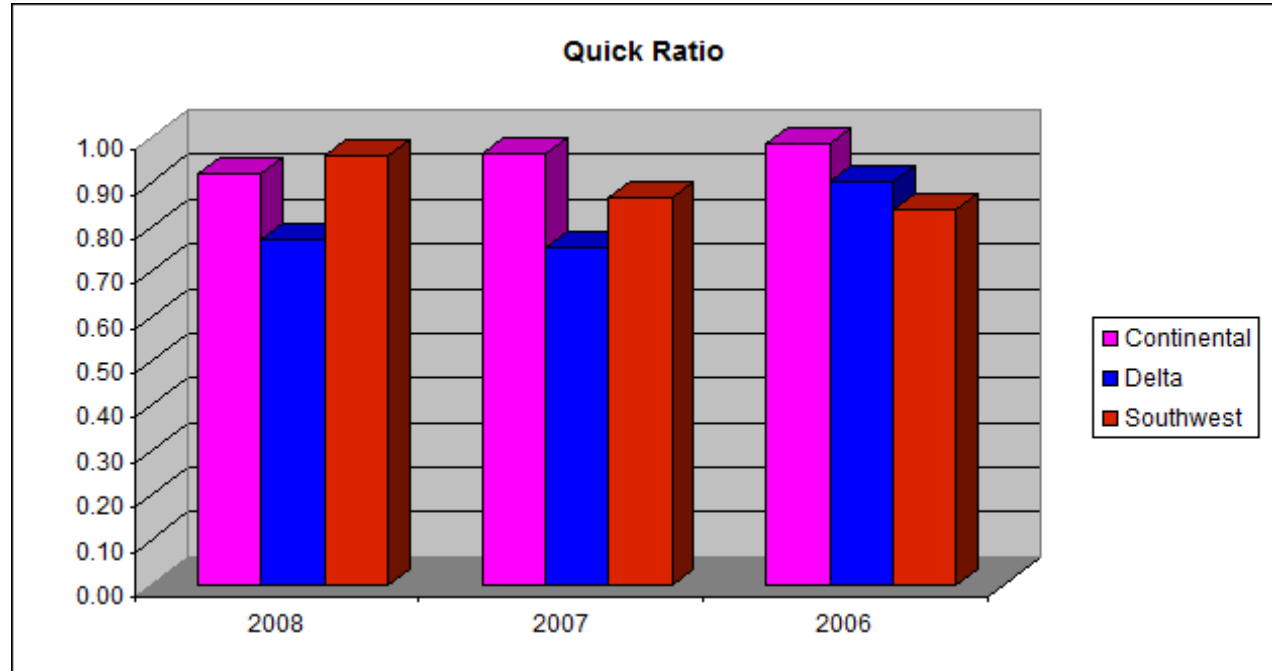
Company	2008	2007	2006
Continental	0.92	0.96	0.99
Delta	0.77	0.75	0.90
Southwest	0.96	0.86	0.84

Averages

Continental = 0.96

Delta = 0.81

Southwest = 0.89



Company	2008	2007	2006
Continental	(4347000-235000)/4474000	(4561000-271000)/4449000	(4129000-217000)/3955000
Delta	(8904000-388000)/11022000	(5240000-262000)/6605000	(5385000-181000)/5769000
Southwest	(2893000-203000)/2806000	(4443000-259000)/4838000	(2601000-181000)/2887000

The quick ratio measures the firm's ability to meet its short term obligations excluding inventory. **Continental** has the best ability to meet the firm's short term obligations excluding inventory and **Delta** has the least ability to meet the firm's short term obligations excluding inventory.

Debt Ratios - DEBT TO EQUITY RATIO

Long-Term Debt / Stockholder's Equity

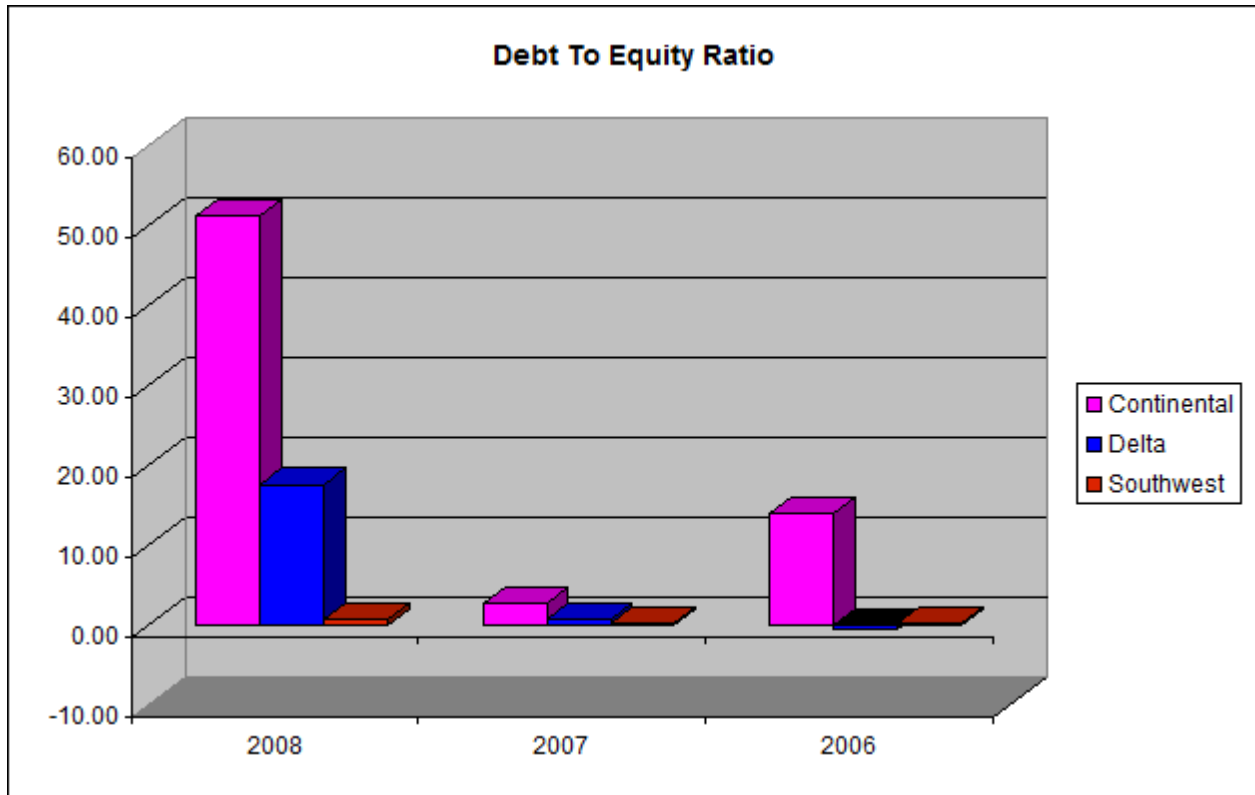
Company	2008	2007	2006
Continental	51.15	2.82	14.00
Delta	17.63	0.79	-0.48
Southwest	0.71	0.30	0.24

Averages

Continental = 22.66

Delta = 5.98

Southwest = 0.41



Company	2008	2007	2006
Continental	5371000/105000	4366000/1550000	4859000/347000
Delta	15411000/874000	7986000/10113000	6509000/(13593000)
Southwest	3498000/4953000	2050000/6941000	1567000/6449000

Debt to equity ratio is a measure of the firm's long term debt. **Southwest** has the least amount of long term debt and **Continental** has the most amount of long term debt.