

# **INSTALLATION INSTRUCTIONS FOR THE STUDENT SAMPLE SCHEMA**

## **INTRODUCTION**

The STUDENT schema is a sample database (originally accompanied to the book "[Oracle SQL by Example](#)" by Alice Rischert) which keeps track of college student/course enrollment data. We will be using this database throughout the course so that you can practice your SQL statements.

## **PURPOSE**

This document describes the files and steps used to create the STUDENT schema in Oracle database. Once created, you can practice SQL statements and complete your practice labs.

## **OVERVIEW**

This document is organized as follows:

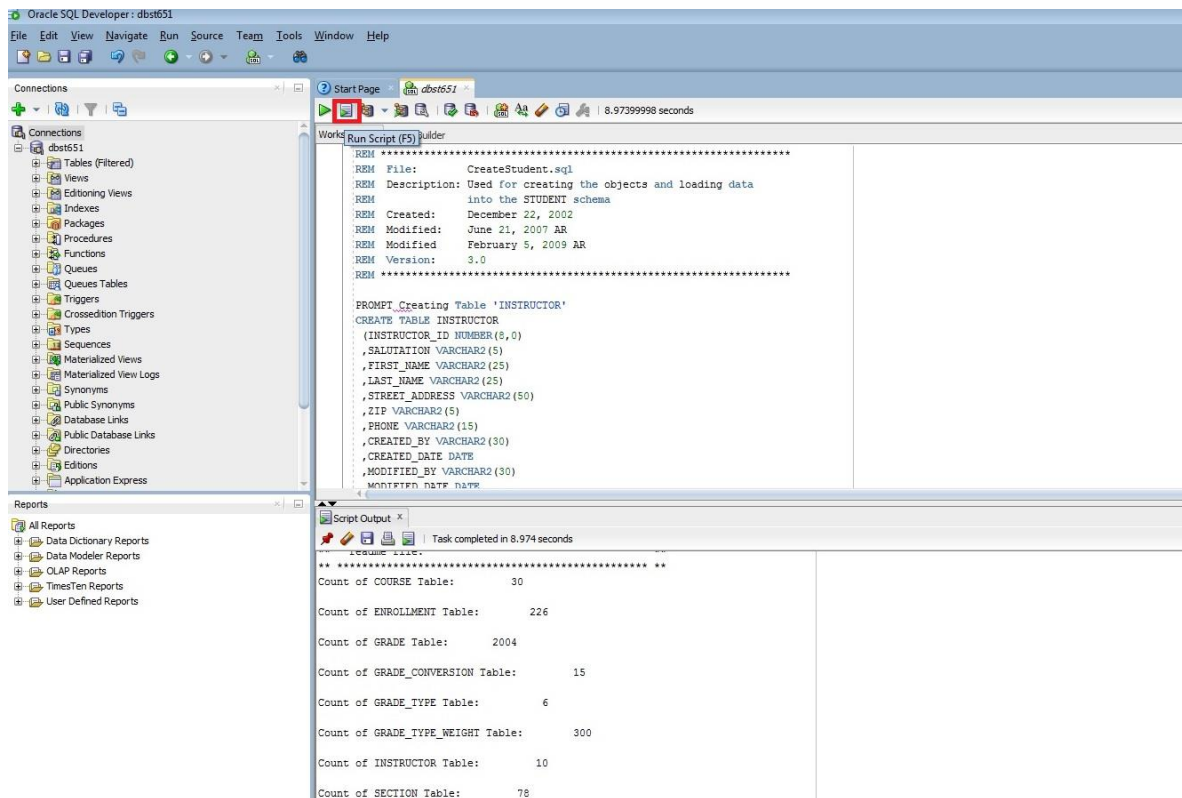
- I. Steps to build STUDENT schema objects and load associated data
- II. Steps to rebuild the objects and data in the STUDENT schema
- III. List of files in the zip file

## **I. STEPS TO BUILD STUDENT SCHEMA OBJECTS AND LOAD ASSOCIATED DATA**

Log into Virtual Lab and start SQL Developer to connect to the Oracle Database. Copy the entire contents of createStudent.sql to the SQL worksheet and then click on the Run Script button. Please do not open the script file in MS Word as it might add special formatting not recognized by SQL Developer. Open it in Notepad instead.

Alternatively, you can transfer the script file to the Z: drive of the Virtual Lab via Google Drive. Or, open a browser and access the course shell, download the zip file, and then unzip it to the Z: drive. Once the script file is in Z: drive, you can load it to SQL Developer SQL worksheet using the File – Open menu, and then run it as script.

Check result from the bottom Script Output area.



## II. STEPS TO REBUILD THE STUDENT SCHEMA

After creating the STUDENT schema, there are cases you need to recreate it. Follow the same instruction specified in the earlier section, except this time you will use rebuildStudent.sql instead of createStudent.sql.

This step will rebuild the objects in the STUDENT schema. You may wish to perform this step if you want to return the STUDENT schema objects to their pristine state. This is especially useful after you have worked through the chapters that focus on data manipulation. For example, if you have just been working on DELETing data, you may wish to restore that data to practice SELECTing the data. Caution: Running this script removes the objects and then creates the objects and reinserts the data!

NOTE: rebuildStudent.sql = dropStudent.sql + createStudent.sql

So you can also run dropStudent.sql first, and then run createStudent.sql to recreate/rebuild the STUDENT schema.

## III. LIST OF FILES IN THE ZIP FILE

The following is a list of the files included in the downloaded zipped file.

1. Readme.pdf: This is the file you are currently reading containing installation instructions.
2. scripts\createStudent.sql: The primary script that creates the objects in the STUDENT schema.
3. scripts\dropStudent.sql: A script that drops STUDENT objects.

4. scripts\rebuildStudent.sql: The script to run for recreating and reloading the STUDENT schema tables.
5. ERD\STUDENT\_Schema\_ERD\_overview.pdf: This file graphically displays the STUDENT schema diagram (by the original author).
6. ERD\STUDENT\_Schema\_ERD\_physical.pdf: ERD with more physical details such as primary keys, foreign keys, and indexes.
7. data\_dictionary\STUDENT\_Schema\_description.pdf: detailed description of tables and columns in the STUDENT schema.
8. data\_dictionary\All\_Tables\_index.html (together with All\_Tables.html and All\_Tables\_toc.html): table/column description in HTML format.