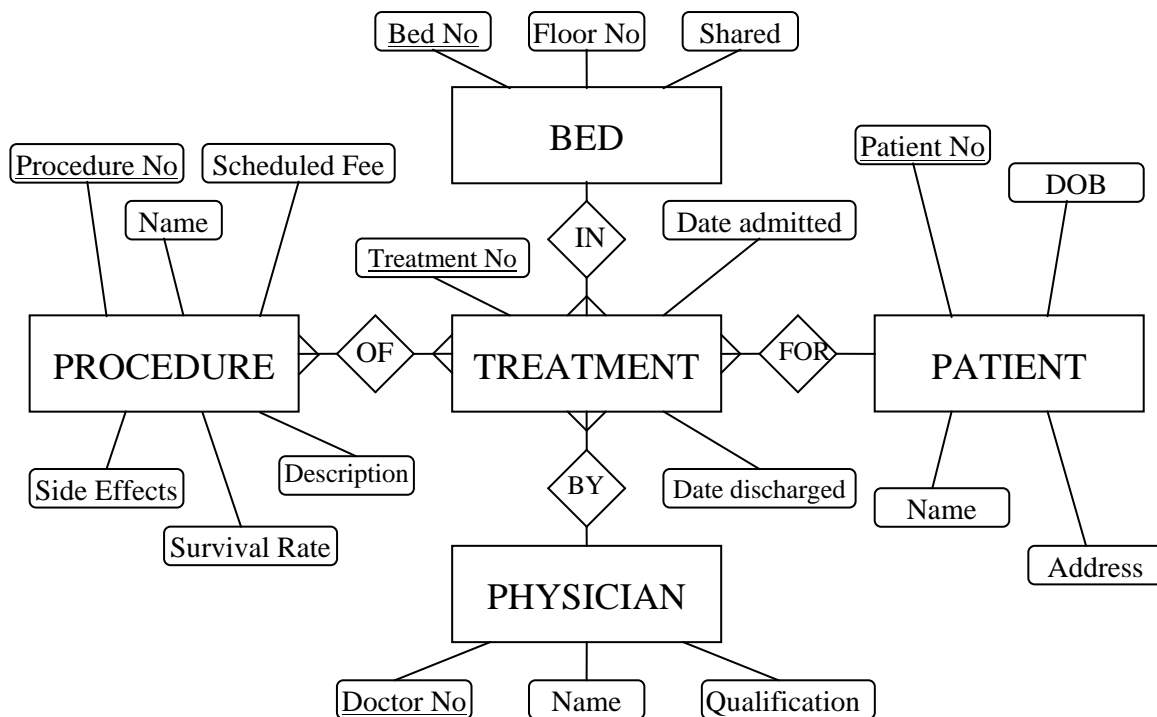


Business Data Management and Analytics

Tutorial 6 - Data Modelling – ERD ↔ Relational

Task 1 – translating ERD to Relational

Draw a relational model for the following HOSPITAL E-R Diagram:



Task 2 – Translating Relational to ERD

Draw E-R diagram (including attributes) for the following FINANCIAL relational model:

CUSTOMER	ACCOUNT	TRANSACTION
<u>Customer_No</u>	<u>Account_no</u>	<u>Transaction_no</u>
Customer_name	<u>Customer_no</u>	<u>Account_no</u>
Customer_address	Account_Balance	Transaction_Date
Date_of_birth	Date_Account_opened	Transaction_Type (Deposit or withdrawal)
		Transaction_Amount

Task 3 – Business Case Model 1

Harry Happy is a used car dealer and runs one of the most profitable car yards in Melbourne. Harry has asked you to design a database for his office computer so he can record details of his sales.

Harry has given you a copy of his current paper invoice to use as a guide:

<u>HARRY'S USED CARS</u>			INVOICE	
SOLD TO: Name: _____ Street: _____ Suburb: _____ State: _____ PostCode: _____ Telephone: (____) ____ - _____			Invoice No: _____ Date: _____	
SOLD BY: _____				
Make	Model	Year	Serial Number	Colour
TOTAL PRICE: _____				

- Produce an E-R diagram and a relational model of your design.
- Also state any assumptions you have made, and any major business rules that may apply to the system.

HOMEWORK EXERCISES

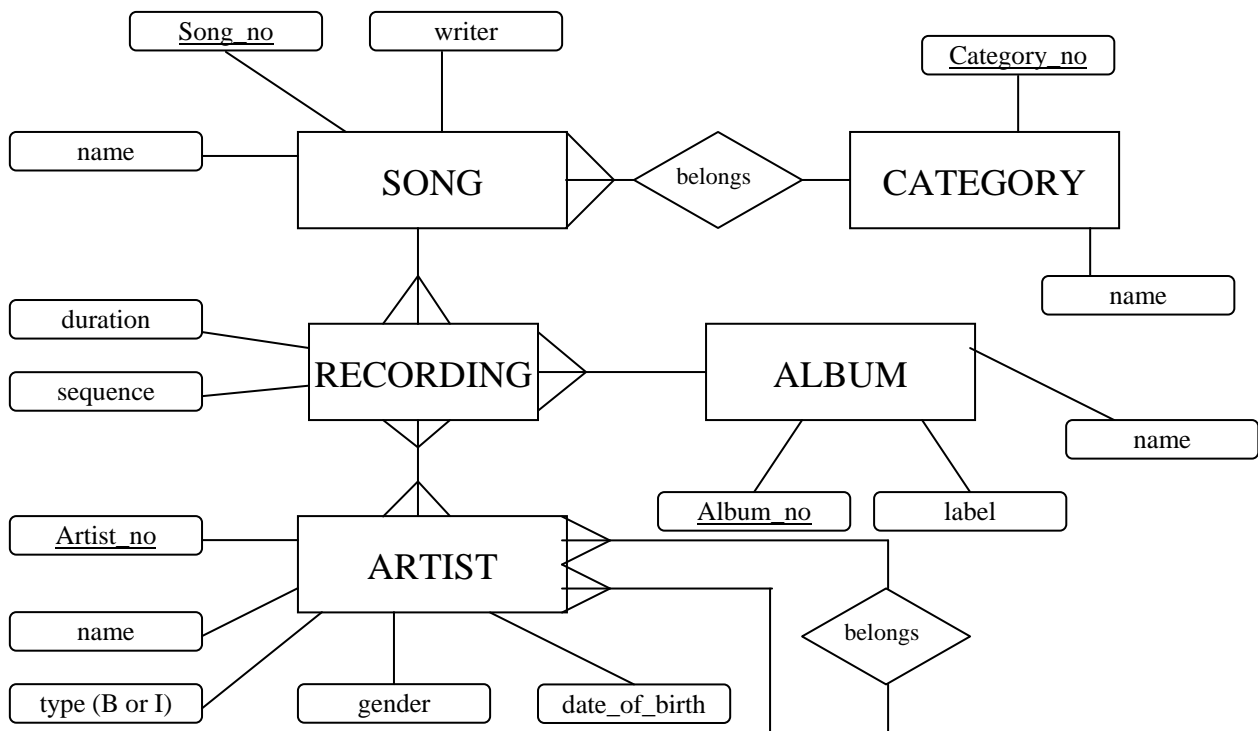
The following two pages contain homework exercises 1 and 2.

You are required to complete these exercises and have them ready at the beginning of tutorial 7 for assessment.

Your answers will be assessed by your tutor during the tutorial class and you will be given both feedback and a mark. The exercises, combined, are worth 1 mark.

Homework 1 – Translating ERD to Relational

Draw a relational model for the following MUSIC COLLECTION E-R Diagram:



Homework 2 – translating Relational to ERD

Draw an E-R diagram (including attributes) for the following PURCHASING relational model:



Customer(Customer ID, Tax ID, Name, Address, City, State, Zip, Phone)

Order(Order No., Customer ID, Date Placed, Date Promised, Terms, Status)

Order Line(Order Line No., Order No., Product Code, Qty)

Product(Product Code, Product Description, Price)